



CRYSTAL-CLEAR IMAGE

LED DISPLAY PRODUCTS CATALOGUE

2018



EKTA Company, founded in 1992, is a leading European developer and manufacturer of high-end LED products, delivering excellence to more than 30 countries around the world.

EXPERIENCE

For more than 25 years, EKTA has established an unchallenged reputation for carrying out hundreds of top quality projects, aimed at installing LED equipment in the fields of advertising, show business, sports, shopping, entertainment, transport, and television.

With an automated manufacturing plant, based in Europe, and a team of Ukrainian, highly-experienced, professional engineers, EKTA steadily improves its innovative solutions in production and application of LED technologies, ensuring brilliant customization strategies and rendering steadfast service and support.



We create visual technology in the atmosphere of fostering partnerships firmly based on self-fulfillment, thus opening a new perspective on the world

EVOLUTION

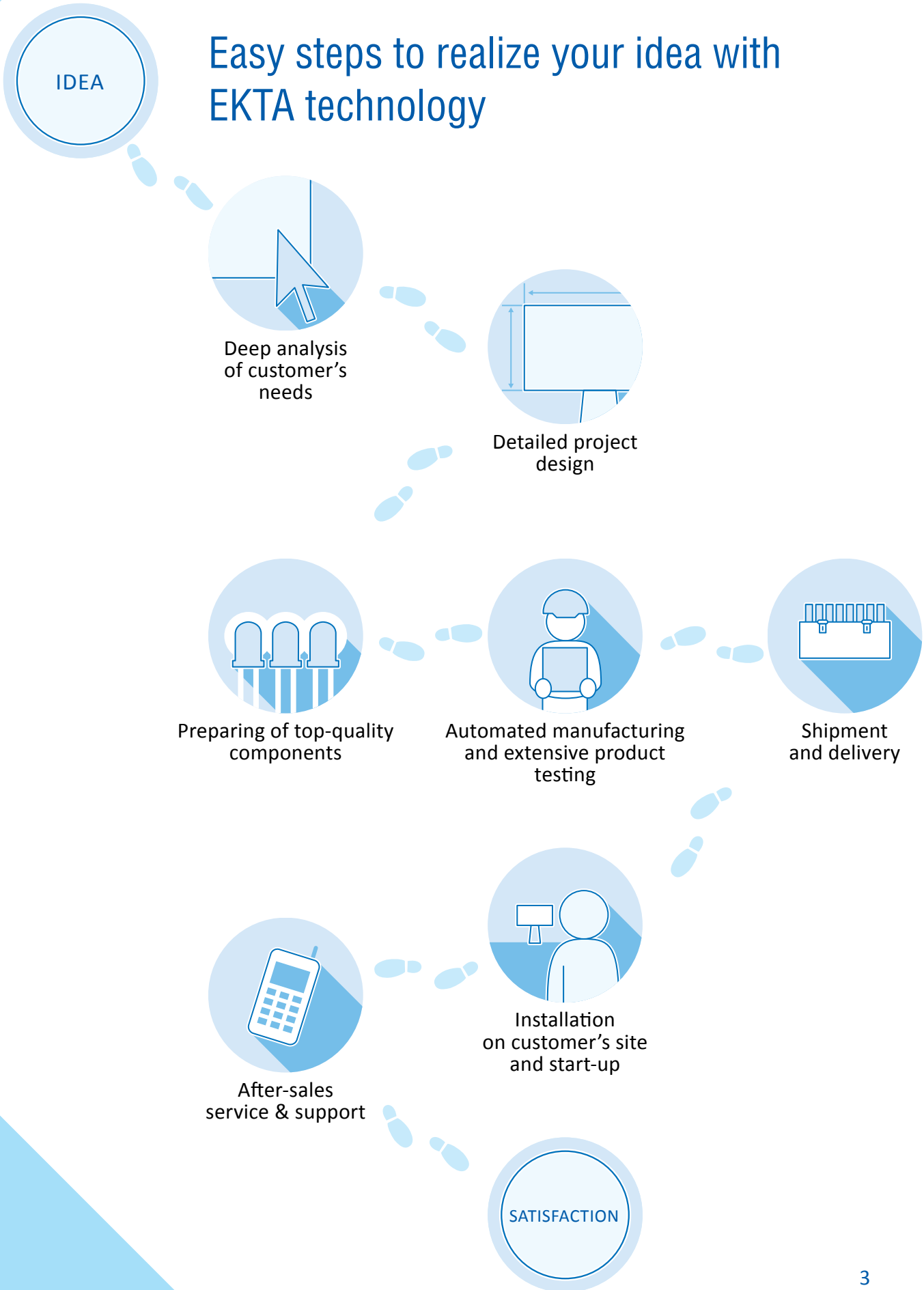
- 1992** EKTA Company foundation
- 1995** EKTA plasma panel display was first installed in Europe
- 2000** EKTA designed and developed its first large LED display
- 2002** EKTA LED screens became the lightest and the thinnest LED displays in the world
- 2004** EKTA introduced the Total Quality Management system
- 2009** EKTA developed breakthrough ERMAC integrated LED display control system
- 2011** EKTA 3D LED TV won a Guinness World Record
- 2013** EKTA received the ProIntegration Award for "Best Solution using Digital Signage Technology"
- 2016** EKTA launched ERMAC Ultra – multifunction control system family
- 2017** EKTA launched Industrial series displays
- 2018** EKTA launched Fine pixel pitch displays for TV studios



Being a design engineer and manufacturer of the whole turn-key solution, including architecture, LED modules, control system, commutation and software, EKTA meets all customers' needs and takes full responsibility for solutions' performance.

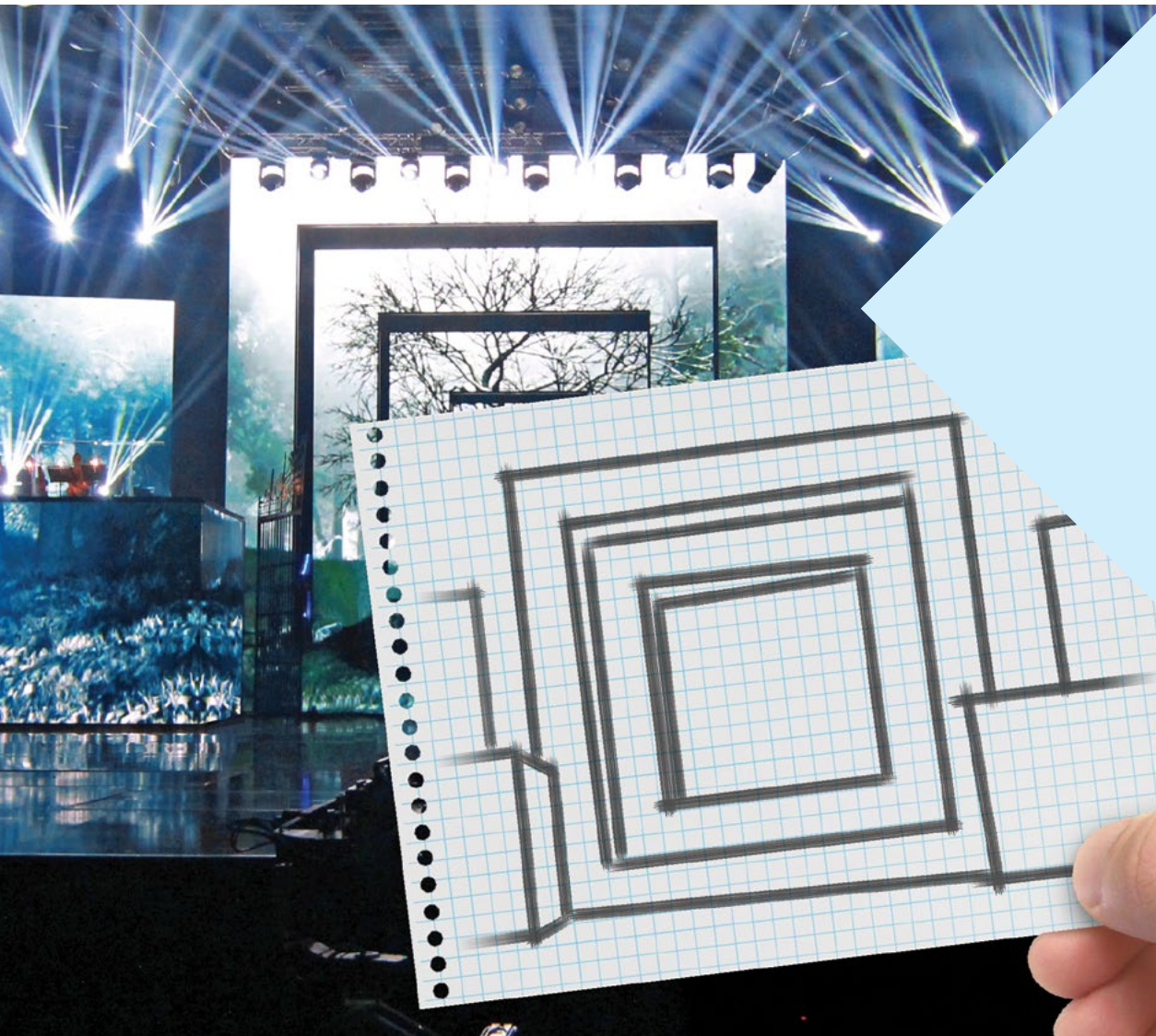
What does the customer receive from EKTA?

- Screen complex design
- Full integration with related systems
- Custom software development
- Deployment and assembly
- After-sales service



COMMITTED to Challenge

Carrying rental DNA, based on own long-time rental business experience, EKTA performs rental and fixed installation projects of top complexity for most demanding customers around Europe. Come and challenge us with your most creative ideas. Make your dreams real with EKTA!



UEFA Draws

20 sqm of iLVM 6C-Q
and 106 sqm of LVM
9C-S, Monaco, 2014

Ultimate live visual performance at low brightness thanks to EKTA cutting-edge video processing and delicate color adjustment of EKTA LED screens on the backdrop to the projecting screens on the front.



Adidas

200 sqm of WOWFloor
in Paris, France, 2016

A luxurious and durable LED WOWFloor mounted on an uneven roof surface and turned it into a giant interactive sports ground proved its resilient and tough design, resisting dynamic vibration loads.



Uniformity² calibration and screen alignment

- Up to 99% color and brightness uniformity
- Pixel-by-pixel brightness and color high-precision calibration
- Real-time alignment after cluster replacement
- No external equipment needed for alignment
- Alignment of screens with different pixel pitch and LED batch

Intelligent Cluster architecture

- Perfect image quality at low brightness
- High performance and no artifacts while shooting on camera thanks to superior refresh rate
- Hot-swap cluster replacement
- Remote cluster and module diagnostics with instant screen monitoring

ERMAC video processing

- 4K resolution support
- Multilayer video mixing, scaling, cropping and lots of other integrated functions
- Real-time image properties control with easy-to-use software
- Smooth processing of high-definition video
- Low latency
- Full range of frame rates support, from 30 Hz to 120 Hz

Combined screen with different LED batches

Notable non-uniform dots

Visible cluster structure of the image



Typical LED display



EKTA LED display

Smooth calibrated image

Seamless image rendering

Low brightness viewed by naked eye or camera

Visible scan lines at low refresh rates

Gradients reproduced as steps

Most dark shades come black



Typical LED display



EKTA LED display

Steady image

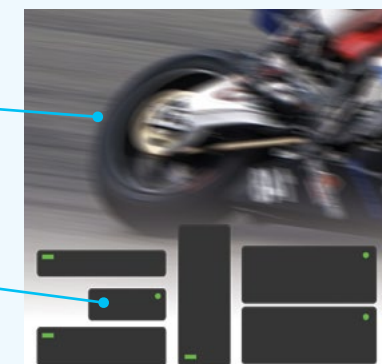
Smooth color gradients

Detailed dark colors reproduction

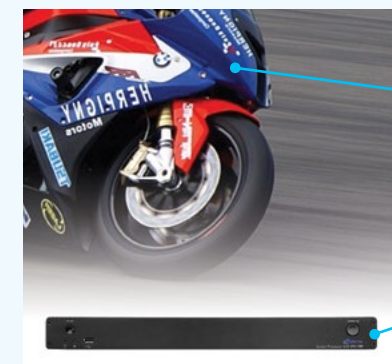
Dynamic content with high frame rate

Lagged video

Several devices to do the same as one ERMAC



Typical LED display



EKTA LED display

Stable and clear dynamic image with low latency

Just one slim controller needed

FrameLED

Ultimate image quality for rental and fixed applications



FrameLED product family to take any top professional challenge

- iLVM 1.7P** Fine pixel pitch for TV studios
- iLVM 2P** Versatile mainstream solution for indoor rentals and fixed projects
- LVM 3P** Multi-function rental product for outdoor and indoor cases

ONE FRAME – ALL PIXEL PITCHES



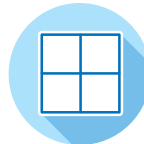
High contrast



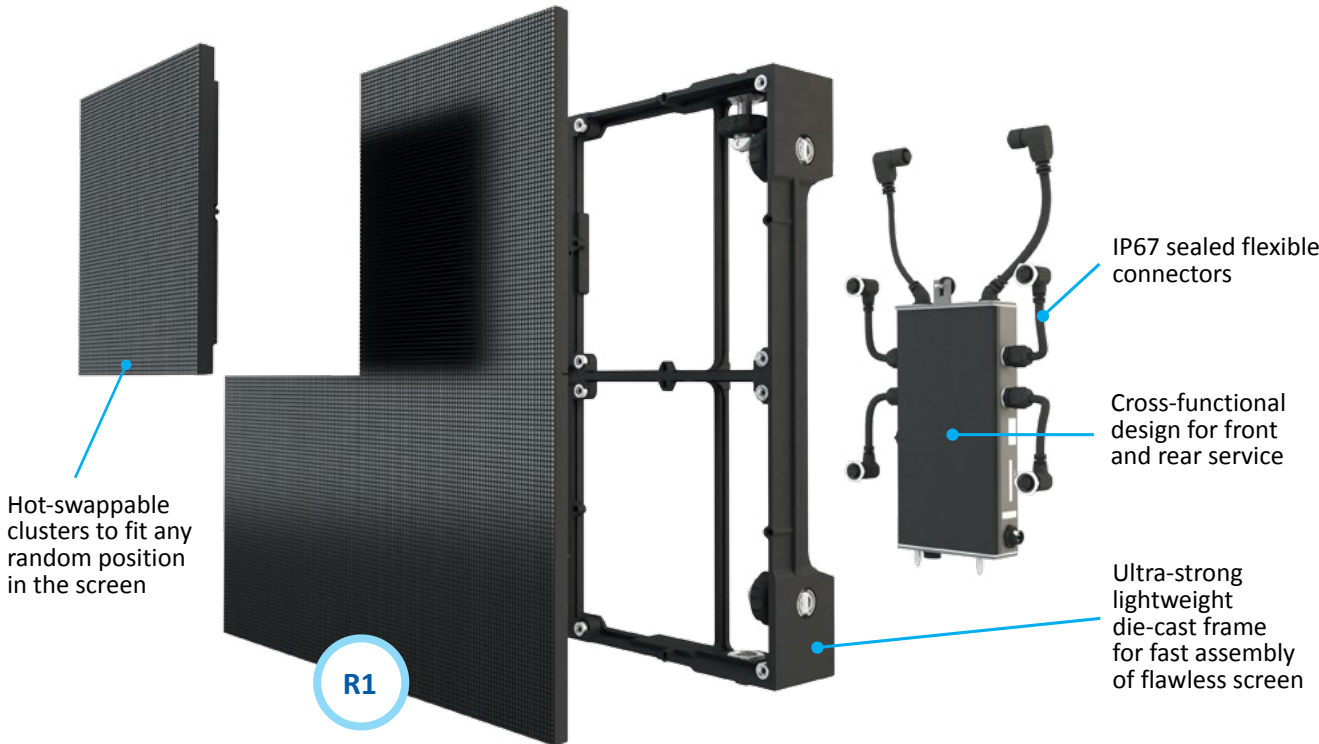
Lightweight



Precise frame



Unique FrameLED form factor
386.4 x 386.4 x 86 mm



| | INDOOR | | OUTDOOR |
|---------------------------------|-------------|-----------|-----------|
| Model | iLVM 1.7C-P | iLVM 2C-P | LVM 3C-P |
| Pixel pitch, mm | 1.7 | 2.68 | 3.86 |
| Brightness, nit | 1000 | 1800 | 3800 |
| Viewing angles, H/V | 160°/160° | 160°/160° | 140°/140° |
| Grey scale, bit | 15 | 15 | 15 |
| Refresh Rate, Hz | 1920 | 3840 | 3840 |
| Maximum power consumption, W/m² | 800 | 800 | 800 |
| Module weight, kg | 4.2 | 4.2 | 5 |
| Screen weight, kg/m² | 28 | 28 | 33 |

BLACK FACE – HIGH CONTRAST

CONTROLLED BY
ERMAG

ONE FRAME – ALL PIXEL PITCHES



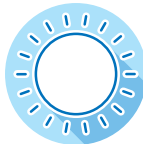
Ultimate component selection for the best performance and reliability



World-renowned Nichia LEDs



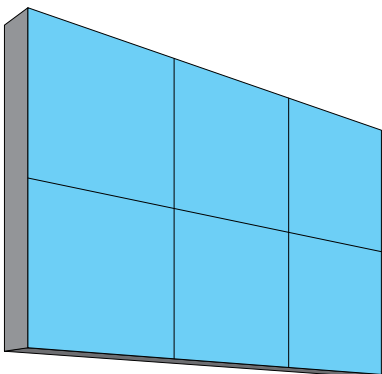
Designed for top-demand projects



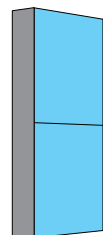
Unbeatable brightness up to 15,000 nit

| | | INDOOR | | | | OUTDOOR | | | |
|---|------------------|------------|-----------|-----------|----------|--------------|--------------|--------------|--------------|
| Model | | iLVM 4C-Qs | iLVM 4C-Q | iLVM 6C-Q | LVM 6C-Q | LVM 9C | LVM 8C-vpR | LVM 10C-vpG | LVM 12C-vpG |
| Pixel pitch, mm | virtual physical | - 4.03 | - 4.83 | - 6.04 | - 6.90 | - 9.66 | 8.05 16.10 | 9.66 19.32 | 12.1 24.15 |
| Brightness, nit | | 3000 | 3500 | 3500 | 9000 | 9000 | 15000 | 11500 | 9500 |
| Viewing angles, H/V | | 160°/160° | 160°/125° | 160°/130° | 150°/85° | 150°/90° | 110°/60° | 110°/60° | 110°/60° |
| Grey scale, bit | | 18 | 18 | 18 | 18 | 16 | 16 | 16 | 16 |
| Refresh Rate, Hz | | 7200 | 7200 | 7200 | 7200 | 600 – 32,000 | 600 – 32,000 | 600 – 32,000 | 600 – 32,000 |
| Maximum power consumption, W/m ² | | 1000 | 900 | 900 | 950 | 1000 | 1000 | 1000 | 1000 |
| Module weight, kg/m ² | | 4.2 | 4.2 | 4.2 | 5 | 5 | 5.2 | 5.2 | 5.2 |
| Screen weight, kg/m ² | | 28 | 28 | 28 | 33 | 33 | 33 | 33 | 33 |

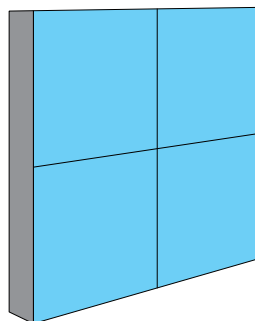
FrameLED product family



RT – the best solution for touring events, several modules (3xR2 and more) assembled and transported together



R2 – cost-effective solution for rental business taking over all the benefits from single module R1 FrameLED by EKTA



R4 – especial 2xR2 design for large-scale led screen rental projects

Classic EKTA solution for rental and hi-end fixed installations



EKTA Selected LED



Widely used rental solutions



Camera-friendly

| | | INDOOR | | OUTDOOR | | |
|---|--|-------------|------------|-----------|------------|-----------|
| Model | | iLVM 4C-Qsc | iLVM 4C-Qc | LVM 4C-Qc | LVM 4C-Qcb | LVM 6C-Qc |
| Pixel pitch, mm | | 4.03 | 4.83 | 4.83 | 4.83 | 6.9 |
| Brightness, nit | | 2500 | 2500 | 8500 | 3300 | 8000 |
| Viewing angles, H/V | | 145°/130° | 145°/125° | 140°/120° | 140°/120° | 140°/120° |
| Grey scale, bit | | 18 | 18 | 18 | 18 | 16 |
| Refresh Rate, Hz | | 4800 | 7200 | 7200 | 7200 | 7200 |
| Maximum power consumption, W/m ² | | 1000 | 1000 | 1000 | 1000 | 1000 |
| Module weight, kg/m ² | | 4.2 | 4.2 | 5 | 5 | 5 |
| Screen weight, kg/m ² | | 28 | 28 | 33 | 33 | 33 |

BLACK FACE – HIGH CONTRAST

CONTROLLED BY ERMAC

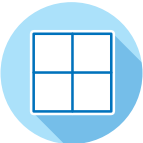


Flexibly customized family of products to meet specific demands of diverse industries

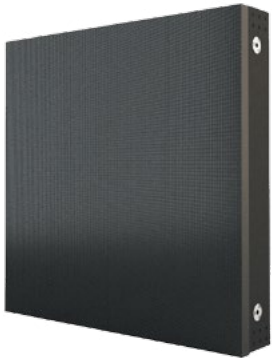
EKTA Industrial Indoor



TV-class image



Die-cast or profile frame



| | INDOOR | | | |
|---|-------------|-----------|-----------|-----------|
| Model | iLVM 1.9C-L | iLVM 2C-L | iLVM 3C-L | iLVM 4C-L |
| Pixel pitch, mm | 1.9 | 2.6 | 3.9 | 4.6 |
| Brightness, nit | 1000 | 1200 | 1200 | 1200 |
| Dimensions, mm | 250x250 | 250x250 | 250x250 | 250x250 |
| Viewing angles, H/V | 140°/140° | 140°/140° | 140°/140° | 140°/140° |
| Grey scale, bit | 15 | 15 | 15 | 15 |
| Refresh Rate, Hz | 3840 | 3840 | 3840 | 3840 |
| Maximum power consumption, W/m ² | 600 | 600 | 600 | 600 |
| Screen weight, kg/m ² | 34 | 34 | 34 | 34 |

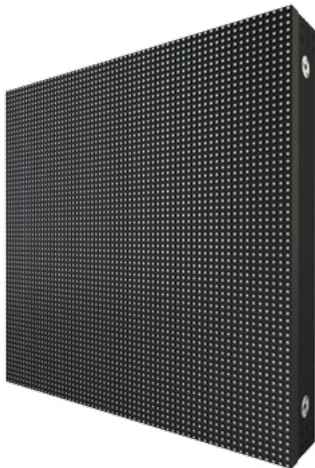
EKTA Industrial Outdoor



Reliable mechanical locks



Calibrated and alignable



| | OUTDOOR | |
|---|-----------|-----------|
| Model | LVM 6C-B | LVM 10C-B |
| Pixel pitch, mm | 6.67 | 10 |
| Brightness, nit | 6000 | 6000 |
| Dimensions, mm | 320x320 | 320x320 |
| Viewing angles, H/V | 140°/120° | 140°/120° |
| Gray scale, bit | 16 | 16 |
| Refresh Rate, Hz | 3840 | 3840 |
| Maximum power consumption, W/m ² | 730 | 730 |
| Screen weight, kg/m ² | 38 | 37 |

CONTROLLED BY
ERMAG

True Performance

TRUE performance is a company that transformed from high level LED display manufacturer EKTA. TRUE performance was founded by a highly experienced team from LED display industry, considering R&D, engineers, technical sales and technical support.

TRUE performance is different from other standard LED screens manufacturers because of the TRUE performance screens architecture, design and processing powered by EKTA ERMAC.

The processing True performance provides is on the market for 25 years.

True performance's R&D and manufacturing facilities are in Europe.

The main advantage of True performance products is unrivalled reliability. The company's quality control system works under the principle of Total Quality Management, providing fault-free equipment operation throughout the entire lifetime due to the high IP protection level, robust, reliable module frame, and unique pre-sale testing system.

Another essential feature of True performance product range is technological superiority. Due to the company's know-hows – Uniformity² calibration and screen alignment as well as to the intelligent cluster architecture, True performance's LED displays ensure brilliant picture at any brightness level.

The next advantage of True performance is reasonable price. Even when you are on a budget, you can get technological superiority for a sensible price. The professional team provides well suited LED solution, considering customers' current needs, overall requirements and performance priorities.



For True Performance products, special Receiving Cards with especial technical characteristics have been developed that make possible to provide in the True Performance products the most unique advantages of EKTA control systems.

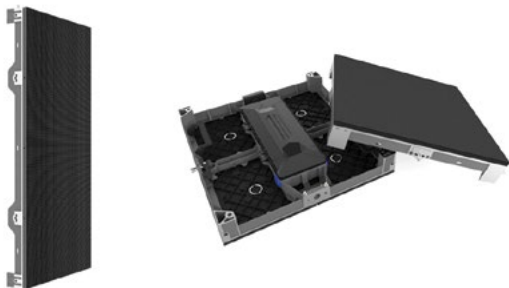


| | RC 037-03 | RC 038-03 | RC 038 | RC G24 | RC G32 | RC G40 |
|----------------------------|---------------|---------------|---------------|------------------|------------------|------------------|
| Input Interface | LVDS | LVDS | LVDS | Gigabit Ethernet | Gigabit Ethernet | Gigabit Ethernet |
| Bit Per Pixel (Input) | 30 | 30 | 30 | 30 | 30 | 30 |
| Output (Module) Interface | LVC MOS | LVC MOS | LVDS | LVC MOS | LVC MOS | LVC MOS |
| RGB Group (Output) | 24 | 32 | 24 | 24 | 32 | 40 |
| Bit Processing (Max.) | 18 | 18 | 18 | 18 | 18 | 18 |
| Max. Size X (Pixel) | 512 | 512 | 512 | 512 | 512 | 512 |
| Max. Size Y (Pixel) | 512 | 512 | 512 | 512 | 512 | 512 |
| Max. Total Pixel | 174 698 | 174 698 | 65 536 | 174 698 | 174 698 | 174 698 |
| Bandwidth | 16 MPixel/s | 16 MPixel/s | 16 MPixel/s | 31.25 Mpixel/s | 31.25 Mpixel/s | 31.25 Mpixel/s |
| Flash Management Interface | SPI | SPI | SPI | SPI | SPI | SPI |
| Configuration Storage | Yes | Yes | Yes | Yes | Yes | Yes |
| Fame VS Jitter | 125 ns | 125 ns | 125 ns | 125 ns | 125 ns | 125 ns |
| EMC Suppression | Yes | Yes | Yes | Yes | Yes | Yes |
| Monitoring | All Parameter | All Parameter | All Parameter | All Parameter | All Parameter | All Parameter |

CREATIVE FREEDOM



- indoor
- fix installation
- front maintenance
- PP 1.2 – 2.5



- indoor
- fix/rental installation
- front maintenance
- PP 2.6 – 4.8



- outdoor
- fix installation
- front/rear maintenance
- PP 5 – 16.7



- outdoor
- fix/rental installation
- front/rear maintenance
- PP 6.25 – 16



- outdoor
- fix installation
- front/rear maintenance,
- PP 13 – 50

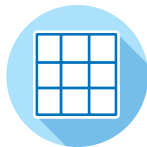
CONTROLLED BY ERMAC

WOWFloor

Tempered glass interactive LED Floor for brilliant real-time visual experience



WOWFloor



Luxury look



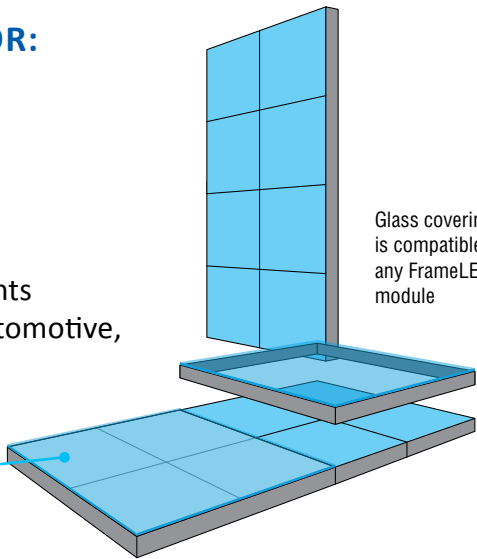
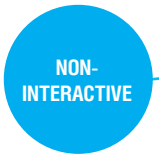
Hard heel-proof surface



Ultrastrong to support load capacity up to 1000 kg/m²

PERFECT SOLUTION FOR:

- Stages
- Night clubs
- TV studios
- Children's activity rooms
- Shopping centers
- Casinos, bars and restaurants
- Advertising projects for automotive, fashion etc



| | INDOOR | |
|-------------------------|--|----------------------|
| Model | iLVF 24C | iLVF 32C |
| Pixel pitch, mm | 24.15 | 32.20 |
| Brightness, nit | 650 | 500 |
| Dimensions, mm | 773 x 773 | 773 x 773 |
| Levelling | adjustable jack, up to 15 mm | |
| Viewing angles, H/V | 60° (180°)/60°(180°) | 60° (180°)/60°(180°) |
| Grey scale, bit | 16 | 16 |
| Refresh Rate, Hz | 600 – 32,000 | 600 – 32,000 |
| Power consumption, W/m² | 350 | 270 |
| Weight, kg/m² | 32 | 32 |
| Protective coating | Impact resistant laminate safety glass | |

CONTROLLED BY
ERMAG

ERMAC Control System Family

Unique design of ERMAC three-level architecture has revolutionized LED video processing technology for LED displays, regardless of the model and configuration

ONE BOX

To replace a full stack of equipment

- LED control system
- Multilayer image processor and scaler
- Color uniformity system
- Embedded PC
- Automated control features
- Advanced screen technical monitoring

ONE TOUCH

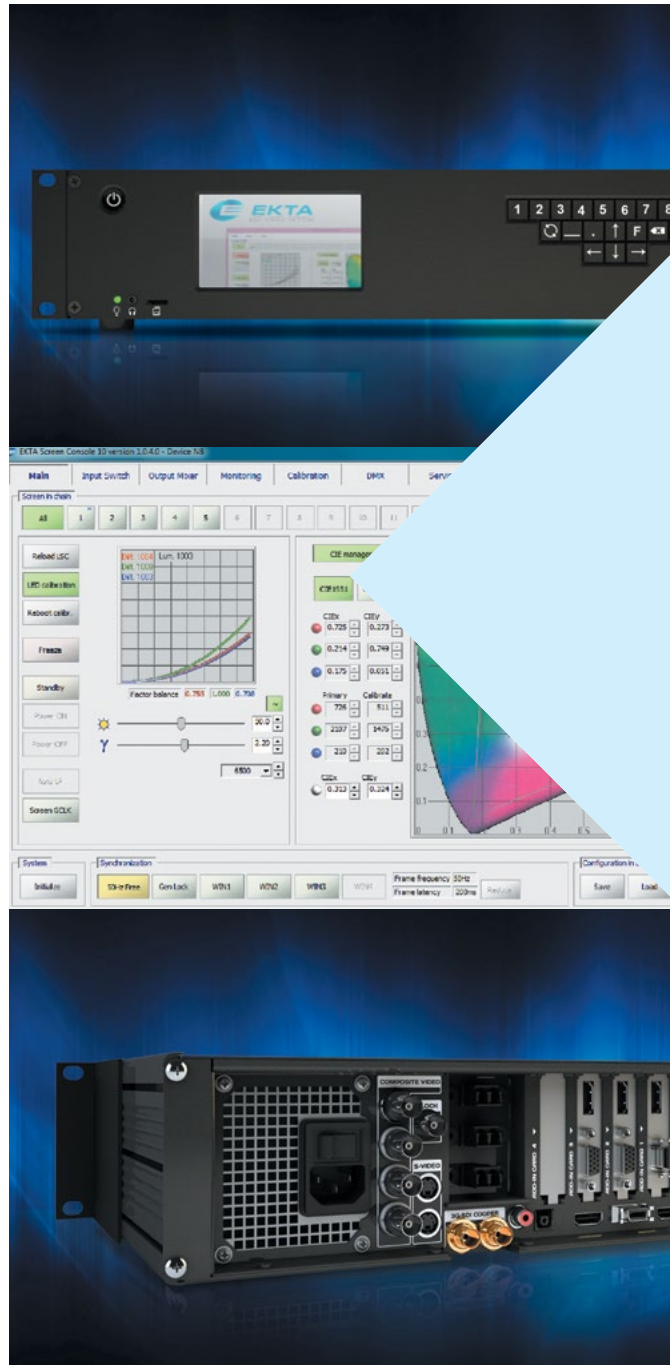
Real-time adjustment

- Color temperature from 3000K to 10000K
- Brightness from 0.1% to 100%, 1024 gradations of each color
- Gamma curve
- Output mixer, picture in picture
- Image cropping and scaling
- Screen and stage designer

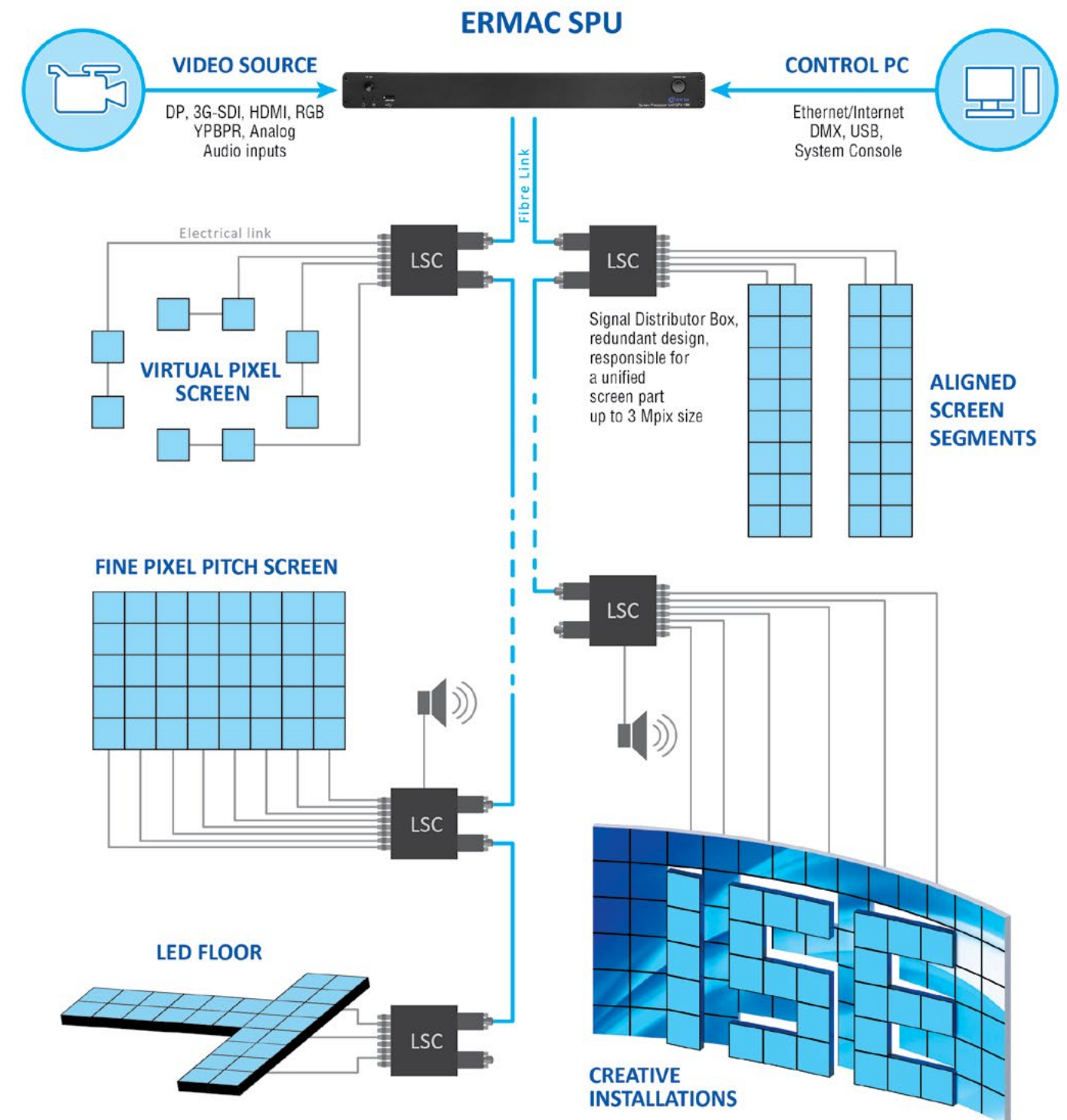
ONE POWER

Outstanding performance for top-demand solutions

- 10/12-bit internal signal processing
- 18-bit LED control
- 30/50/60/75/100/120 Hz frame rates
- 4K resolution
- Up to 32 displays controlled by one SPU
- 3D ready



ONE TOUCH - FULL CONTROL



One SPU allows controlling up to 32 LED screens of different size and shape

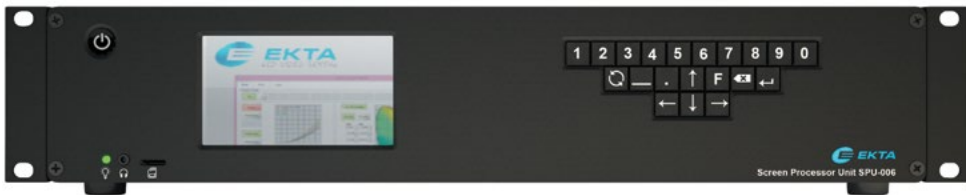


ERMAC Ultra with SPU-10 series



World's leading LED screen control and video processing power in a thin blade

| Model | SPU-10E | SPU-10B (base) | SPU-10M (medium) | SPU-10F (full) |
|-----------------------------------|--|--|---|---|
| SYSTEM FEATURE | | | | |
| Embedded PC | None | None | Qseven standard | Qseven standard |
| Embedded OS | None | None | Windows 8 Embedded Standard | Windows 8 Embedded Standard |
| Image Channel (simultaneous) | 1 | 2 | 3 | 4 |
| CONTROL | | | | |
| Control Interface (simultaneous) | USB 2.0, DMX | USB 2.0, DMX | System, USB 2.0, Ethernet, DMX | System, USB 2.0, Ethernet, DMX |
| Configurable and Control Software | ESConsole, Screen Builder (Desktop/laptop PC Location) | ESConsole, Screen Builder (Desktop/laptop PC Location) | ESConsole, Screen Builder (Embedded PC Location) | ESConsole, Screen Builder (Embedded PC Location) |
| INPUT | | | | |
| Display Port | 2560 x 1600 x 60 Hz | 1920 x 1200 x 60 Hz | 2560 x 1600 x 60 Hz | 3840 x 2160 x 60 Hz |
| HDMI | 2560 x 1600 x 60 Hz | 1920 x 1200 x 60 Hz | 2560 x 1600 x 60 Hz | 3840 x 2160 x 30 Hz |
| DVI-D | 2560 x 1600 x 60 Hz | No | No | No |
| CVBS | No | Yes | Yes | Yes |
| 3G SDI (Copper) | No | 1 | 1 | 2 |
| 3G SDI (Fiber) | No | No | No | Yes, 2 |
| Audio Input | DP, HDMI, DVI-D | 3G SDI, DP, HDMI | 3G SDI, DP, HDMI | 3G SDI, DP, HDMI |
| Genlock | No | Yes | Yes | Yes |
| OUTPUT | | | | |
| Fiber optic display link | No | 1 x 2.3 Mpx | 2 x 2.3 Mpx | 4 x 2.3 Mpx |
| Gigabit Ethernet | 4 x 0.57 Mpx | No | No | No |
| HDMI | No | No | 1 (2560 x 1600 x 60 Hz) | 1 (2560 x 1600 x 60 Hz) |
| 3G SDI LOOP | No | No | 1 | 2 |
| Audio Output | S/PDIF Audio packet transfer over FO | AES/EBU Audio packet transfer over FO | AES/EBU HDMI Output Audio packet transfer over FO | AES/EBU HDMI Output Audio packet transfer over FO |



ERMAC Plus with SPU-006 series

Extendable integrated control unit to customize input/output set with extension cards

- Allows adding up to 4 Add-In-Cards (AiC) into 19” rack mounting case
- 5 image channels (1 motherboard & 4 AiC with flexible configurations of new HDMI)

| | | |
|----------------|------------------------------|--|
| Model name | SPU-006 | |
| System feature | Chassis | MBE-024 Motherboard + up to 4 2RU AiC, depth 220 mm |
| | Embedded PC | With Intel Atom based CPU |
| | Image Channel (simultaneous) | 1 (motherboard) + 4 (AiC) |
| Control | Control Interface | System Console , USB, DMX, Ethernet, WEB-Interface |
| | Control Software | ESConsole, ESPanel, WEB interface |
| Inputs | Display Port | 1 DP 1.1 up to 3840 x 2160 (WUXGA) at 50/60 Hz, 36 bit/px color depth |
| | HDMI | 2 HDMI 1.4, up to 3840 x 2160 (WUXGA) at 25/30 Hz, 36 bit/px color depth |
| | 3G SDI | 1 x BNC 3G/HD/SD-SDI |
| | Optical input | 3 x LC-LC fiber optic connector for SDI (standard SFP) |
| | Audio Input | 1 S/PDIF, 4 XLR, 4 RCA + 1 RCA, HDMI embedded audio, DP embedded audio |
| Outputs | Optical | 2 x LC-LC 6,25 Gigabit multimode screen links, 8,86 MPx max frame out, 30 bit/px color depth |
| | 3G HDMI | 1 HDMI 1.4 up to 1920 x 1200 x 50/60 Hz, 10 bit color depth |
| | Audio Output | 1 RCA S/PDIF, 1 x TOSLINK S/PDIF |

| Extension cards | | |
|-----------------|---------------------|---|
| hsPCS-094 | Video input | 1 HDMI 1.3 up to 1920 x 1200 at 50/60 Hz 1 BNC 3G/HD/SD-SDI, standard support SMPTE-424M, SMPTE 292M, SMPTE 344M, SMPTE-259M 1 DFP, YPbPr up to 1080i 8, 10 bit/px color depth (optional connector) |
| | Video output (LOOP) | 1 BNC 3G/HD/SD-SDI, standard support SMPTE-424M, SMPTE 292M, SMPTE 344M, SMPTE-259M |
| hPCS-093 | Video input | 1 HDMI 1.4 up to 1920 x 1200 at 50/60 Hz, 36 bit 1 HDMI 1.4 resolution up to 3840 x 2160 at 50/60 Hz, 36 bit (using two boards) |
| | Video output | 1 HDMI 1.4 up to 1920 x 1200 at 50/60 Hz, 36 bit |



EKTA introduces the family of all-in-one controllers to bring outstanding image quality and high performance to advertisement, digital signage, industrial TV and other special purpose screens.

ceLSC-085

| | | |
|-----------------------|-------------------|---|
| Input | Embedded PC | Q7-BT system, Intel® HD 4000 1.91 GHz CPU, RAM DDR3L 4GB, SSD 32GB |
| | Operating system | Windows Embedded |
| | USB | 3 x USB 2.0 (1 channel configurable as client) |
| | Ethernet | 1Gbit LAN |
| | Memory card | micro SD slot |
| Output | Screen Interface | 8 LVDS output ports |
| | Output resolution | Up to 1024 x 768 pixel |
| | Audio Output | S/PDIF, Line |
| Control | Control Interface | Ethernet, system console |
| Diagnosics | Feedback values | LED cluster temperature; module power supply values; LED module current; outside temperature; outside luminance |
| General design | Dimensions | 170 x 170 x 25 mm |
| | Power | 12 VDC, 10 Watt |
| Operating temperature | | -25° to 60° C |

ceLSC-099

| | | |
|----------------|-----------------------|---|
| Input | Embedded PC | Q7-BT system, Intel® HD 4000 1.91 GHz CPU, RAM DDR3L 4GB, SSD 32GB |
| | Operating system | Windows Embedded |
| | USB | 2 x USB 2.0 (1 channel configurable as client), 1 x USB 3.0 |
| | Ethernet | 100 Mbit LAN |
| | Memory card | micro SD slot |
| Output | Video | DisplayPort 1.1 |
| | Screen Interface | 8 LVDS HSI output ports |
| | Output resolution | Up to 1920 x 1080 pixel |
| | Audio Output | S/PDIF, Line |
| Control | Video Output | DisplayPort 1.1 |
| | Control Interface | Ethernet, system console |
| Diagnosics | Feedback values | LED cluster temperature; module power supply values; LED module current; outside temperature; outside luminance |
| General design | Dimensions | 170 x 170 x 25 mm |
| | Power | 12 VDC, 10 Watt |
| | Operating temperature | -25° to 60° C |

aeLSC-101

| | | |
|----------------|-----------------------|---|
| Input | Embedded PC | ARM-based |
| | Operating system | Linux |
| | Video | DisplayPort, 1920 x 1080 pixel |
| | Ethernet | 100 Mbit LAN |
| | Wireless | WiFi (optional) |
| Output | Screen Interface | 12 LVDS HSI output ports |
| | Output resolution | Up to 1920 x 1080 pixel |
| | Audio Output | S/PDIF, Line |
| | Video Output | DisplayPort , 1920 x 1080 pixel (optional) |
| Control | Control Interface | Ethernet, system console |
| Diagnosics | Feedback values | LED cluster temperature; module power supply values; LED module current; outside temperature; outside luminance |
| General design | Dimensions | 170 x 170 x 25 mm |
| | Power | 12 VDC, 7 Watt |
| | Operating temperature | -25° to 60° C |

5 KEY FACTS *about EKTA*

1

Reliable partner – 25 years
of flawless reputation

2

Skilled developers
and manufacturers

3

Creator of LED display
total solution

4

Expert in LED panel mechanical
and electronic engineering

5

World's leader in LED control
and video processing



TAKE MORE
PROJECTS
WITH EKTA

KEY REPRESENTATIVE OFFICES



GERMANY
Lilienthal Str. 5
34123 Kassel
Tel: +49 (0) 561-8907999-6
Fax: +49 (0) 561-8907999-4
info@ektavision.de
www.ektavision.de



HEAD OFFICE

GERMANY
Lilienthal Str. 5
34123 Kassel
Tel: +49 (0) 561-8907999-6
Fax: +49 (0) 561-8907999-4
info@trueperformance.eu
www.trueperformance.eu

REGIONAL OFFICE

SLOVAK REPUBLIC
Tomášikova 58, 080 01 Prešov,
Tel: +421 915 788 389
Tel: +421 51 77 11 242
info@trueperformance.eu
www.trueperformance.eu



FRANCE
16 Avenue Galilée
92350 Le Plessis Robinson
Tel: +33 1 40 92 50 00
infocontact@videlio-events.com
www.videlio-events.com



UAE
44942, Abu Dhabi
Tel: + 971 2 6346900
www.site-technology.com



UKRAINE
Turivska str., 31, office 9
04080 Kyiv
Tel: +38 044 428 7315
Fax: +38 044 428 7319
office@ekta-led.com
www.ekta-led.com